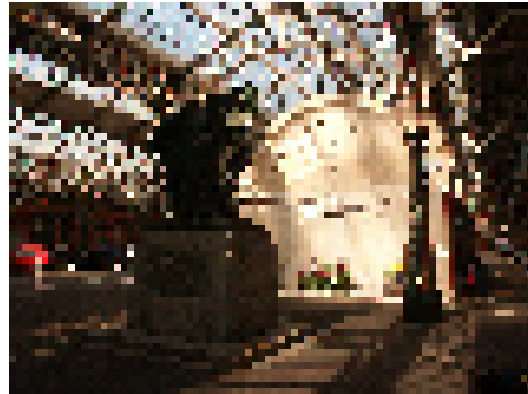


CLOKE F.W

Not recorded as a war casualty by the CWGC



Ashford War Memorial



Dover Marine Railway Memorial

Able Seaman 185806 Frederick William CLOKE. HMS “Implacable”, Royal Navy (R.N). Died of T.B 22nd April 1917 aged 38 years at 12 Francis Road, Ashford, Kent. Born Ashford 9 April 1880. Resided (1901) 35 Kent Avenue, Ashford, Kent. Son of John Cloke of 44 Bridge Street, Ashford, Kent. Brother-in-Law of Charles Cramp of Ashford. Buried 26th April 1917 at Ashford Cemetery, Ashford, Kent. Grave reference 7268 (no headstone).

Frederick's death is not recorded as a war casualty by the Commonwealth War Graves Commission. Frederick contracted T.B whilst a serving sailor and died of the **same disease** 7 months after being invalided out of the navy. **This means that his death was attributable to his war service.** He was as much a casualty of the Great War as someone shot through the head and deserves his name to be recorded as such...

Before the outbreak of war Frederick was working in the Engineers Department at the Ashford Railway Yards. His name was NOT placed on the town's railway tribute but it was placed on the Dover Marine (SE&CR) Railway War Memorial.

Frederick's father John Cloke was born Saltwood, Kent 1833 and was a Railway Labourer at the Ashford SE&CR Yards. Frederick joined the Royal Navy on the 9th April 1898. He served on the following ships – Boscawen, Alexandra, Centurion, Wildfire, Vermon, Black Prince. On the 9th September 1915 Frederick was invalided out of the navy on medical grounds (T.B).

The 1881 Census gives –

44, Bridge Street, Ashford

John
Frederick W CLOKE

Saltwood 1833 (48 years)
Ashford in 1880

Railway Labourer



Frederick's Grave in the old Ashford Cemetery (unmarked behind W Beale)